



Contents

Bulletin Board

2018 Nationals Special

NEXT MEETING

Tuesday 20th November 2018

Leys Institute (upstairs)

20 Saint Marys Road

Ponsonby

COMMITTEE

Chairman - John Swarbrick Dave Stewart
Secretary - Brett Peacock Lance Whitford
Treasurer - TBC

EDITOR: Lance Whitford
e: lancewhitford@hotmail.com

WEBMASTER: Robert Willis
e: jaxbw@orcon.net.nz

EMAIL: ipmsauckland@gmail.com
WEB: ipmsauckland.hobbyvista.com
YAHOO:
groups.yahoo.com/group/ipmsauckland
FACEBOOK:
Link from the IPMS Auckland Website

From the Editor

This year's IPMS nationals were held as part of the annual Armistice weekend show at Lake Karapiro. There were a few Auckland members, including myself went down for the weekend while some attended one of the days. Modellers came from all over New Zealand from as far away as South Otago to participate in the event. The get together dinner on Saturday night was well attended and very enjoyable. Combining the nationals with the larger Armistice event added to the interest of the weekend and ensured that there was plenty to see with something for all tastes.

For more pictures and news [click here](#).



BULLETIN BOARD

NEW MEMBERS AND SUBS *** 2018/19 NOW DUE *******

Subs for 2018/19 now DUE -see below for club account details or see the club secretary
at the next club meeting.

Membership Type	Description	Cost
Full	Living in the Auckland Metropolitan Area	NZ\$45
Out Of Town	Living 75km or more from central Auckland	NZ\$30
Junior	Same rights as full membership for those under 16	NZ\$25

IPMS BANK ACCOUNT NUMBER

03 0162 0012960 00

*Please add your name and details
so we know who has paid!*

EVENTS

CLUB NIGHT EVENTS

**IPMS Auckland Meet on the 3rd
Tuesday of every Month at the
Leys Institute (upstairs), 20
Saint Marys Road, Ponsonby**

20th November Theme build competition.
Bring along those pacific
war or WWI models for the
culmination of this years
theme build.

18th December Prizes will be awarded for
November's winners fol-
lowed by our traditional end
of year drinks at the Cav.

MODELLING EVENTS

IPMS Auckland will putting on a stand at the New Zea-
land Motorcycle show .



BULLETIN BOARD

CLUB SUPPORT

The following retailers have kindly agreed to offer IPMS Auckland club members a discount on their purchases upon presentation of their current IPMS Auckland Membership card.

The discount only applies on selected product lines and remains at the discretion of the retailer.



ModelAir

349 Dominion Road
Mount Eden
Auckland
p: 09 520 1236



Stoker Models

Cnr Market Rd & Gt South Rd
Auckland
p: 09 520 1737
10% on kits and modelling supplies



TOYWORLD

Toyworld Henderson
56 Railside Rd, Henderson
Toyworld Westgate
1 Fernhill Dve, Westgate

15% Off the normal retail price on:

- All models and modeling accessories
- All Hornby
- All Siku
- All Schleich & Collecta figures and accessories
- All Meccano
- Lego (Excludes Lego Mindstorm's they will be 10% if available as most have already been pre-ordered)

(Note: not in conjunction with any other promotion)



Merv Smith Hobbies

27 Davis Crescent
Newmarket
Auckland

10% off most items on presentation of IPMS Auckland Membership Card.

Avetek Limited

Gwyn and Christina Avenell
28 Lauren Grove, RD 2, Papakura,
Auckland 2582, New Zealand.

p: +64 (09) 298 4819,
m: +64 (0)27 343 2290
e: aveteknz@gmail.com

www.avetek.co.nz
New Zealand Master Agents for:

Auszac ECO Balsa • Bob Smith Industries - Cyanoacrylates and Epoxies • Airsail International Kitsets

IPMS NZ Nationals 2018

Here is a selection of images from the weekend showing the venues and some of the many attractions on display including our own display and competition.









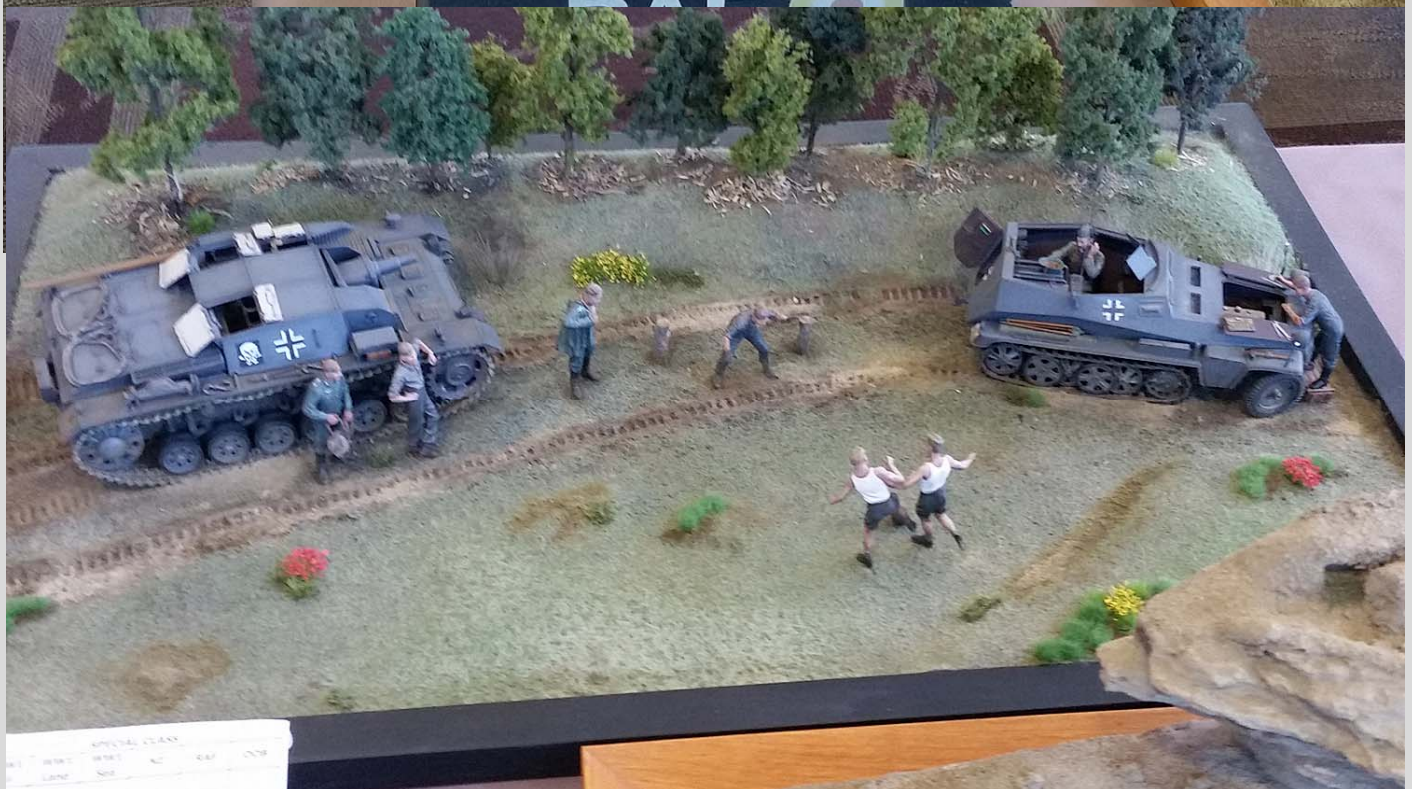








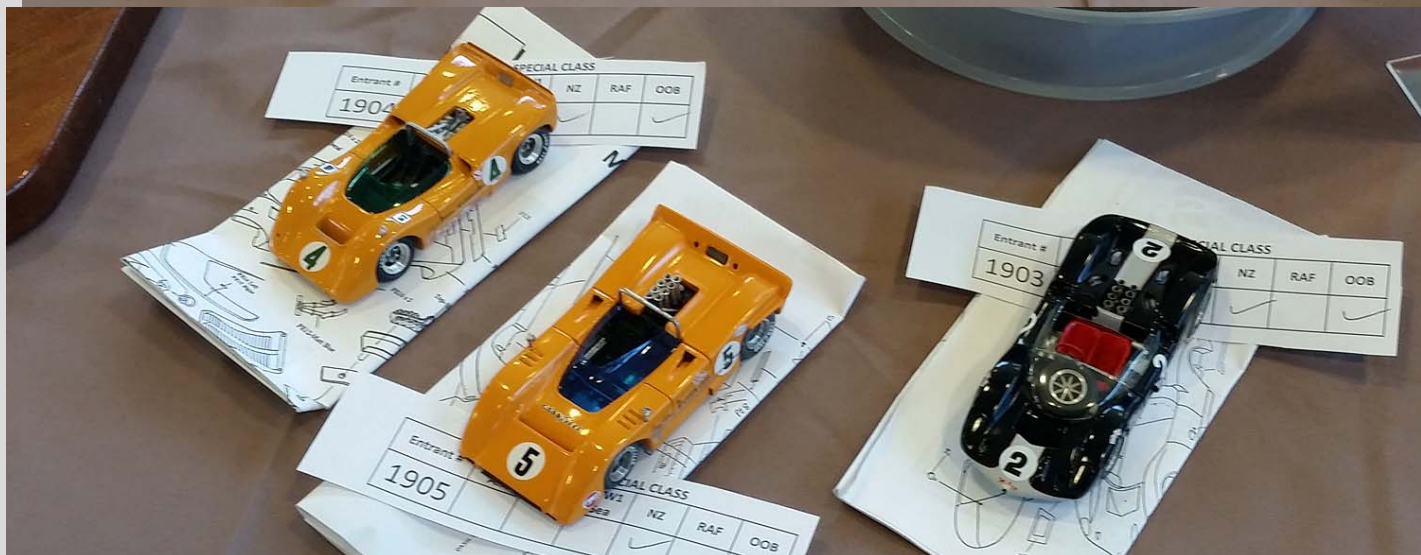
















GALLERY

CLUB NIGHT MODELS

Check out our Website gallery for photos taken of models at our monthly meetings

<http://ipmsauckland.hobbyvista.com>



And as usual -check out the IPMS Auckland website as we're trying to keep the content a bit more dynamic. We won't be regurgitating content found on other websites but will provide links to sites we think are of interest to members.

